

CW-LJX-0046

Antenna Extension Cable

Key Features

Frequency: 0-6G

SMA Female To IPEX

Cable length 60 mm



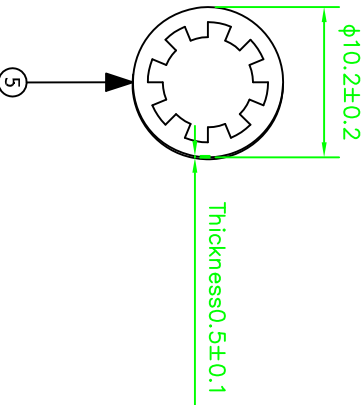
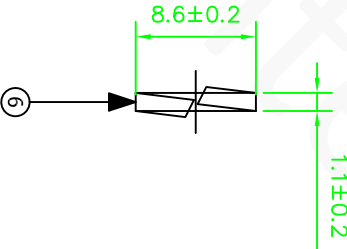
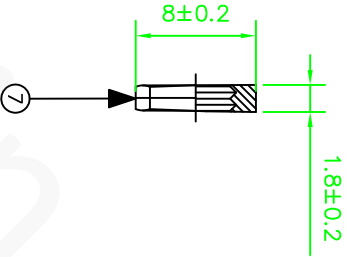
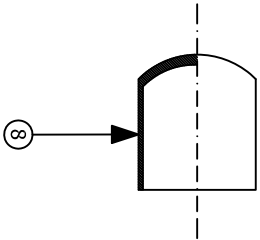
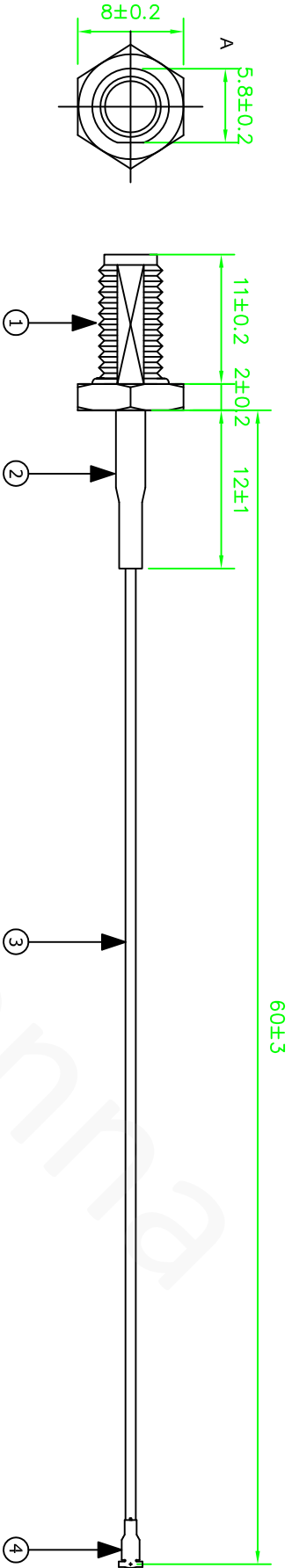
1. Antenna Cable Electrical Characteristics

Band (MHz)		
Frequency (MHz)	0-3G	3-6G
VSWR	1.4:1	1.6:1
Impedance (Ohm)	50	
Max. Input Power (W)	10	

2. Material and environmental characteristics

Connector 1	SMA Female
Connector 2	IPEX or equivalent
Cable Type	RF1.13
Dimensions (mm)	60MM
Operation Temperature	-40 to +80
Storage Temperature	-40 to +80
Antenna Storage life(year)	10
Substance Compliance	ROHS

REV		DATE	DESCRIPTION
X1	2021/09/08		New Issue



Specification:
Frequency Range: 0-6G
Impedance: 50Ω
V.S.WR: ≤ 1.4 (0-3G)
 ≤ 1.6 (3-6G)

8	Dust Cap	Red Silicone	1		4	Connector 2	$\phi 1.13$ I-PEX I(equivalents)	1	
7	Nuts	Brass gilding	1		3	CABLE	$\phi 1.13$ Black double tin wire	1	
6	Shrapnel	Gold plating on iron	1		2	TUBE	2.5mm*12mm ordinary black	1	
5	shim	Brass gilding	1		1	Connector 1	SMA Female head Orichalium plating	1	
NO		DESCRIPTION	QTY	REMARK	NO		DESCRIPTION	QTY	REMARK
XX.	± 5.0	APPROVED							
X.	± 3.0								
.X	± 1.0	CHECKED							
.XX	± 0.2								
.XXX	± 0.1	DRAWING							
			REV	UNIT	FILE				
			X1	m/m	SHEET :	1/1			



Cowin Antenna

4. Antenna test parameters

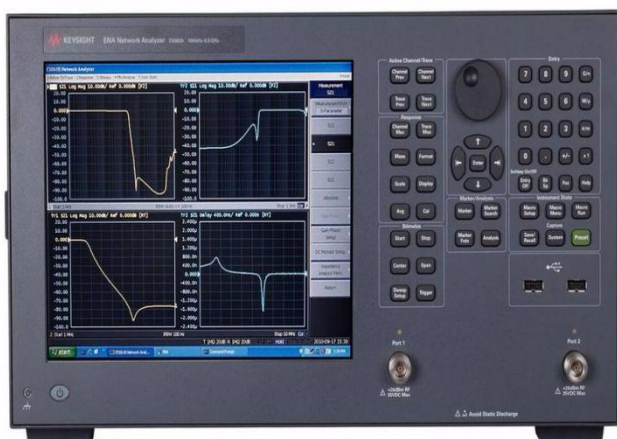
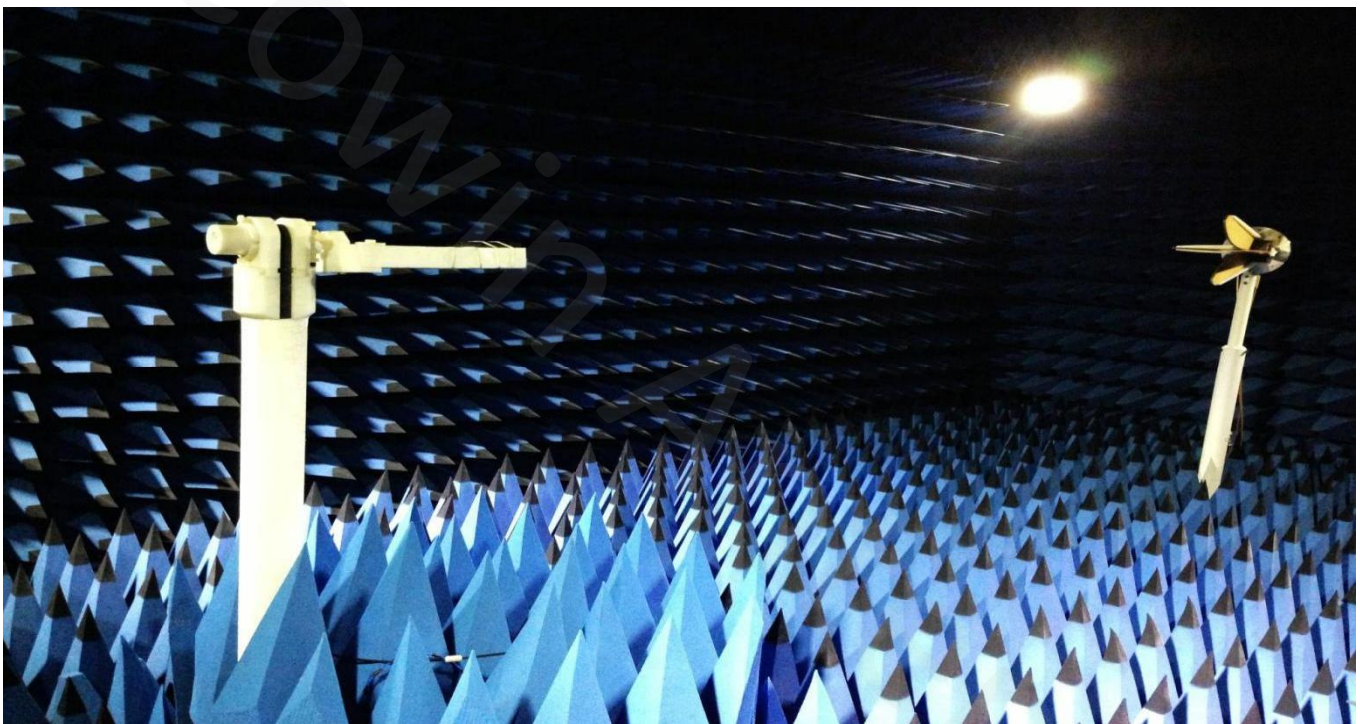
Antenna Measurement Conditions:

Mounted on Ground Plane of 280 x 80 mm

Measured in Certified 3D Anechoic Chamber

The network analyzer is Agilent 5071c

The comprehensive tester is Agilent cmv500



4.1 VSWR



4.2 Return loss

